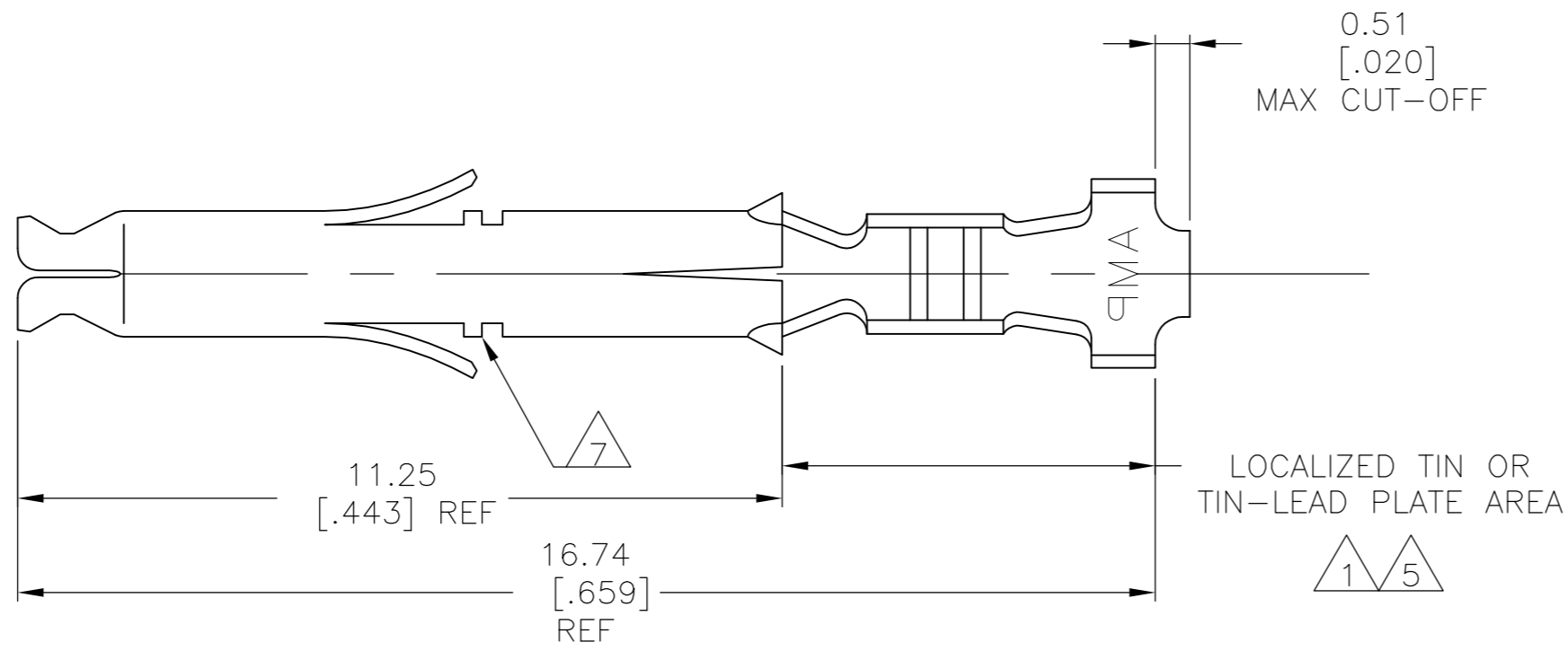
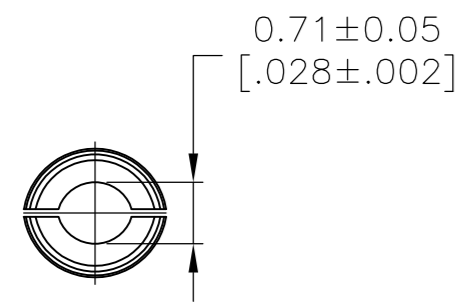
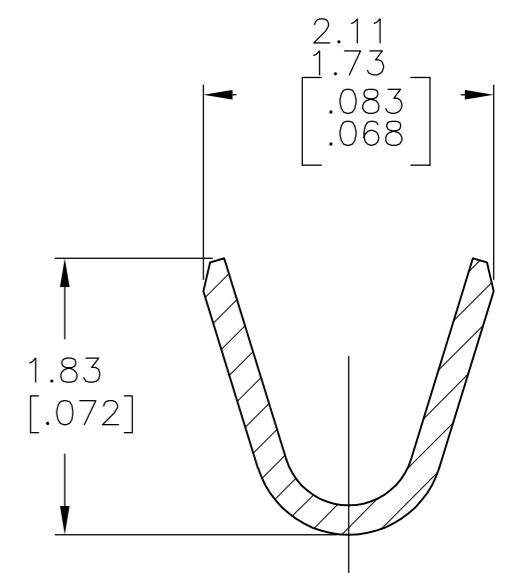
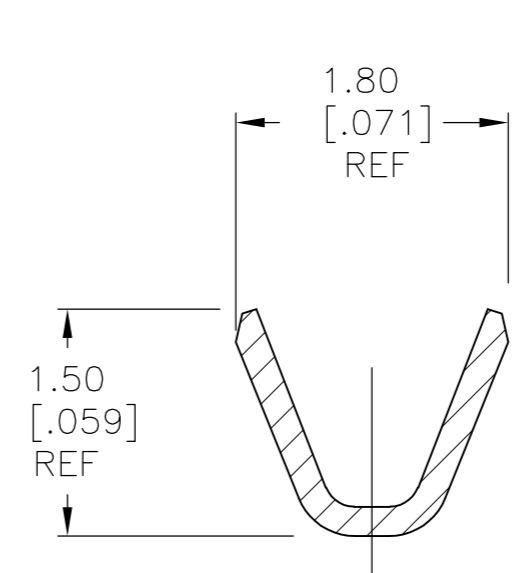
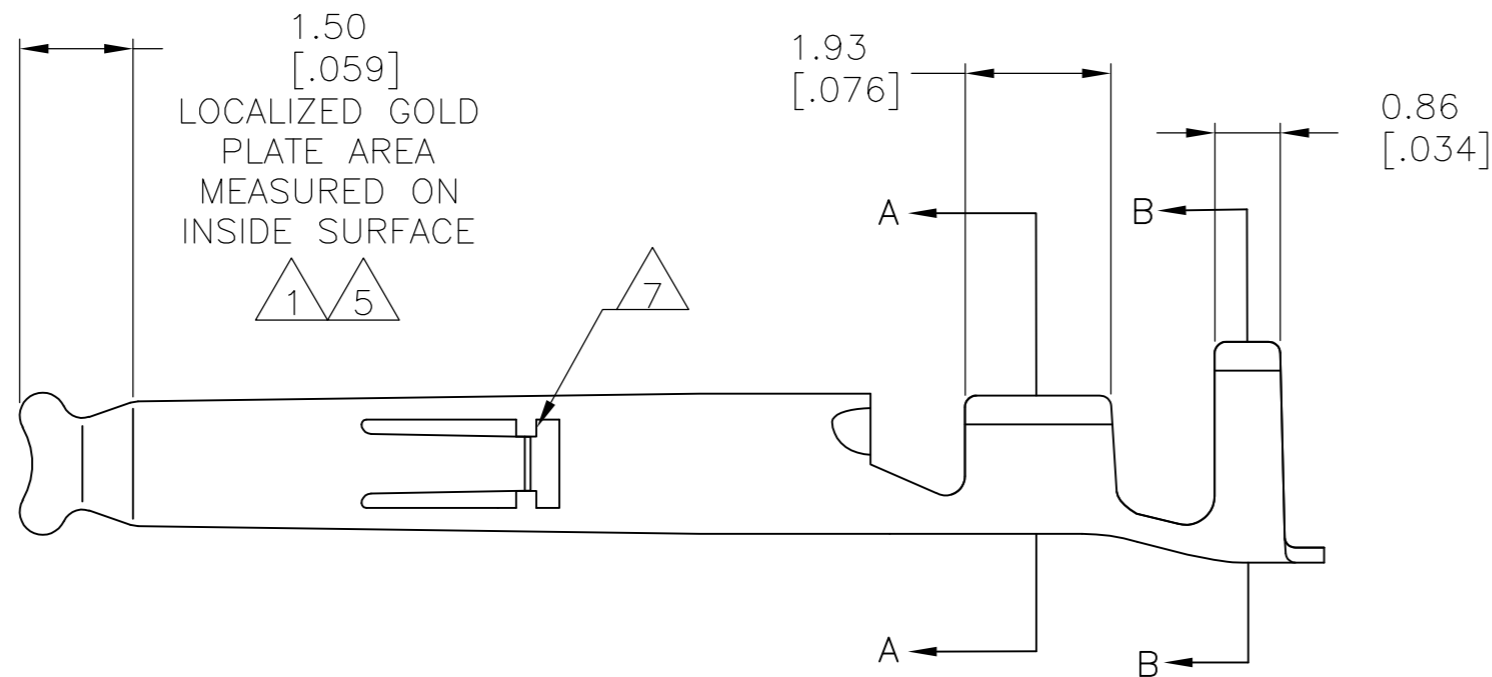


THIS DRAWING IS UNPUBLISHED. RELEASED FOR PUBLICATION
 © COPYRIGHT BY TYCO ELECTRONICS CORPORATION. ALL RIGHTS RESERVED.

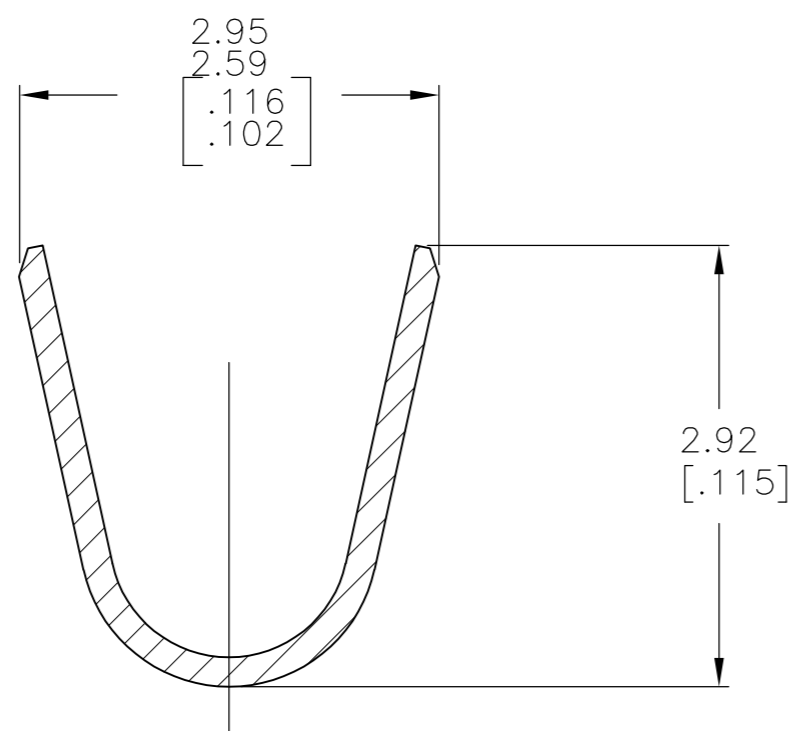
| LOC | | DIST | | REVISIONS | | | |
|-----|-----|-------------|--|---------------------------|---------|------|----|
| P | LTR | DESCRIPTION | | DATE | DWN | APVD | |
| CM | 00 | M | | REVISED PER ECO-07-009745 | 01MAY07 | KW | CJ |



- 1 0.00076 [.000030] MIN GOLD IN LOCALIZED GOLD PLATE AREA AND 0.00254 [.000100] MIN BRIGHT TIN-LEAD IN LOCALIZED TIN-LEAD PLATE AREA OVER 0.0013 [.000050] MIN NICKEL.
- 2 WIRE RANGE: 0.12 - 0.4mm² (26-22 AWG).
- 3 INSULATION RANGE: 1.20-1.75 [.047-.069] DIA.
- 4 DIMENSIONS IN BRACKETS ARE IN INCHES.
- 5 0.00076 [.000030] MIN GOLD IN LOCALIZED GOLD PLATE AREA AND 0.00254 [.000100] MIN BRIGHT TIN IN LOCALIZED TIN PLATE AREA OVER 0.0013 [.000050] MIN NICKEL.
- 6 OPTIONAL CONSTRUCTION OF WIRE BARREL.
- 7 LANCE STOPS ARE AN OPTIONAL CONSTRUCTION AND MAY NOT BE PRESENT ON ALL PARTS.



OPTIONAL CONSTRUCTION 6
SECTION A-A
SCALE 20:1



SECTION B-B
SCALE 20:1

| FINISH | MATERIAL | PART NUMBER |
|---------|--------------------|-------------|
| 5 | 0.20 [.008] PH BRZ | 1-770902-1 |
| 5 | 0.20 [.008] BRASS | 1-770902-0 |
| 1 | 0.20 [.008] PH BRZ | 770902-6 |
| PRE-TIN | 0.20 [.008] PH BRZ | 770902-4 |
| 1 | 0.20 [.008] BRASS | 770902-3 |
| PRE-TIN | 0.20 [.008] BRASS | 770902-1 |

| | | | | |
|--|--------------------|-----------------------|---|--|
| THIS DRAWING IS A CONTROLLED DOCUMENT. | | DWN S. HOOVER 16OCT02 | Tyco Electronics Corporation Harrisburg, PA 17105-3608 | |
| DIMENSIONS: mm [INCHES] | | CHK C. JONES 16OCT02 | NAME SOCKET, MINI UNIVERSAL MATE-N-LOK(TM) | |
| TOLERANCES UNLESS OTHERWISE SPECIFIED: | | APVD C. JONES 16OCT02 | SIZE A2 CAGE CODE 00779 C=770902 | |
| 0 PLC ± - | 1 PLC ± - | PRODUCT SPEC | RESTRICTED TO | |
| 2 PLC ± - | 3 PLC ± 0.15[.006] | APPLICATION SPEC | SCALE 10:1 SHEET 1 OF 1 REV M | |
| 4 PLC ± - | ANGLES ± 1' | WEIGHT - | | |
| MATERIAL - | FINISH - | CUSTOMER DRAWING | | |

METRIC